

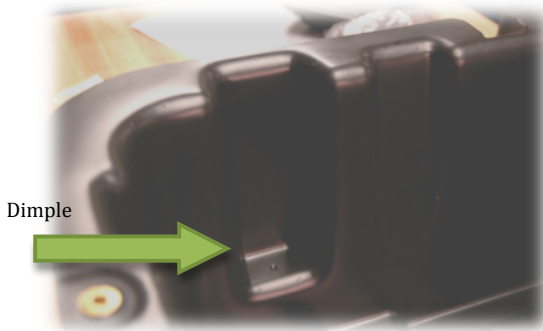
# Instructions for Installation of QuickBox Commercial Boxes with Hold-Downs

## Tools Needed:

- Drill size W or X
- 9/16" wrench



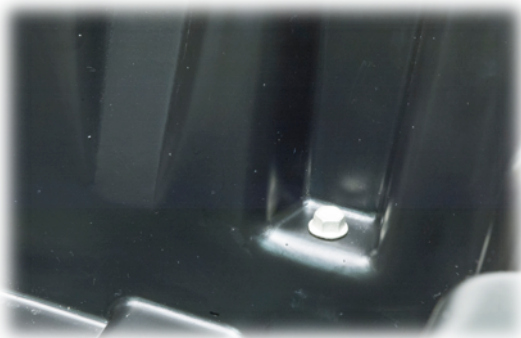
**Step 1:** Layout battery box and mounting brackets. Align C shaped mounting brackets under the four mounting bosses, two each side.



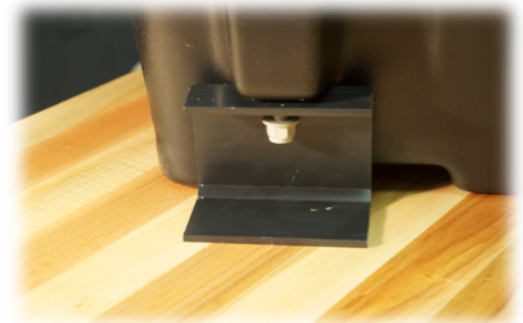
**Step 2:** Locate dimple inside of the mounting bosses for drilling.



**Step 3:** Once positioned for final mounting, drill through dimples in four mounting bosses down through the C brackets.



**Step 4:** Place flanged bolt through hole, connecting box to bracket. Secure with washer and locknut on bracket side.



**Step 5:** Secure C bracket for your specific application.